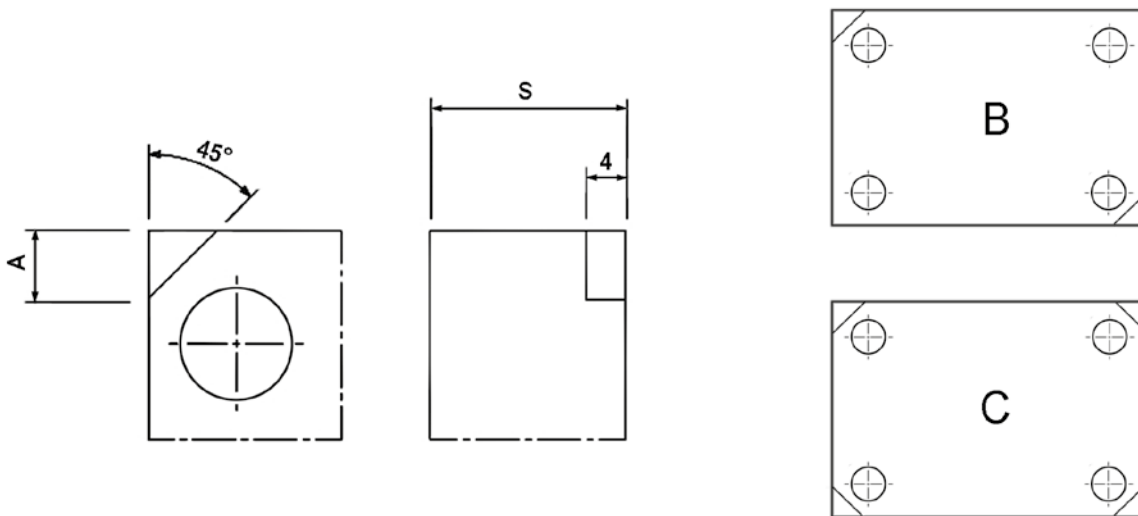


SCARICO APERTURA STAMPO
MOLD OPENING LEVER SLOT
ABHEBEECKE FORMÖFFNUNG



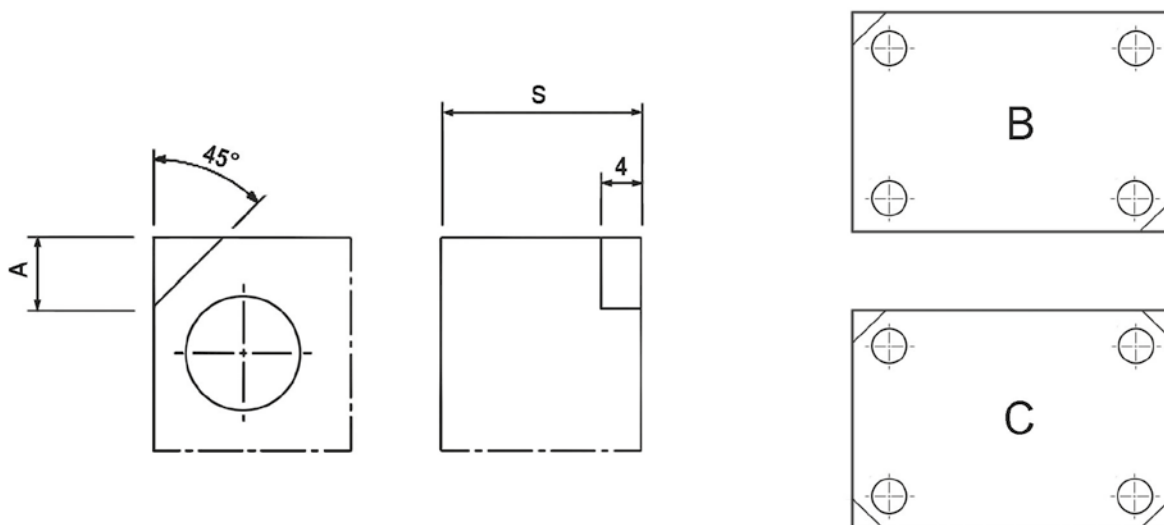
PIASTRA PLATE PLATTE	SERIE SERIES SERIE	N° DI SCARICHI N° OF LEVER SLOTS Nr. ABHEBEECKEN	A															
			S 22	S 26	S 36	S 46	S 56	S 66	S 76	S 86	S 96	S 106	S 116	S 136	S 146	S 156	S 196	
PSX	156	2 (B)	-	16	16	16	16											
196 (x196/246/296/346)		2 (B)		16	16	16	16											
196 (x396/446)		2 (B)		-	20	20	20											
246		2 (B)		-	20	20	20											
296		2 (B)			23	23	23	23	23									
346 (x346/396/446/496)		2 (B)				23	23	23	23		23							
346 (x546/596/646/696)		2 (B)				34	34	34	34		34							
396		2 (B)				34	34	34	34		34	34						
446		2 (B)				34	34	34	34		34	34	34		34			
PI / PM	156	2 (B)	16	16	16	16	16	16	16									
196 (x196/246/296/346)		2 (B)	16	16	16	16	16	16	16		16							
196 (x396/446)		2 (B)	20	20	20	20	20	20	20		20							
246		2 (B)		20	20	20	20	20	20		20							
296		2 (B)		23	23	23	23	23	23		23		23					
346 (x346/396/446/496)		2 (B)		23	23	23	23	23	23		23		23					
346 (x546/596/646/696)		2 (B)		34	34	34	34	34	34		34		34					
396		2 (B)			34	34	34	34	34		34	34	34		34			
446		2 (B)			34	34	34	34	34		34	34	34		34			
PX	156	2 (B)		16														
196 (x196/246/296/346)		2 (B)		16														
196 (x396/446)		2 (B)		20														
246		4 (C)			20													
296		4 (C)			23													
346 (x346/396/446/496)		4 (C)				23												
346 (x546/596/646/696)		4 (C)				34												
396		4 (C)				34												
446		4 (C)				34												



SCARICO APERTURA STAMPO

DIE OPENING LEVER SLOT

ABHEBEECHE FORMÖFFNUNG



PIASTRA	SERIE	N° DI SCARICHI	A														
PLATE PLATTE	SERIES SERIE	N° OF LEVER SLOTS Nr. ABHEBEECKEN	S 22	S 26	S 36	S 46	S 56	S 66	S 76	S 86	S 96	S 106	S 116	S 136	S 146	S 156	S 196
PSXE	156	2 (B)				-	16	16	16								
196 (x196/246/296/346)		2 (B)				-	16	16	16		16						
196 (x396/446)		2 (B)				-	20	20	20		20						
246		2 (B)				-	20	20	20		20						
296		2 (B)				-	23	23	23		23		23				
346 (x346/396/446/496)		2 (B)					23	23	23		23		23				
346 (x546/596/646/696)		2 (B)					-	34	34		34		34				
396		2 (B)					-	34	34		34	34	34		34		
446		2 (B)					-	34	34		34	34	34		34		
*496		2 (B)					-	34	34	34	34		34	34		34	34
*546		2 (B)					-		34	34	34		34	34		34	34
*596		2 (B)							34	34	34		34	34		34	34
*696		2 (B)							40	40	40		40	40		40	40
*796		2 (B)							40		40		40	40		40	40
PI-Z	156	2 (B)	16	16	16	16	16	16	16								
196 (x196/246/296/346)		2 (B)	16	16	16	16	16	16	16		16						
196 (x396/446)		2 (B)	20	20	20	20	20	20	20		20						
246		2 (B)		20	20	20	20	20	20		20						
296		2 (B)		23	23	23	23	23	23		23		23				
346 (x346/396/446/496)		2 (B)		23	23	23	23	23	23		23		23				
346 (x546/596/646/696)		2 (B)		34	34	34	34	34	34		34		34				
396		2 (B)			34	34	34	34	34		34	34	34		34		
446		2 (B)			34	34	34	34	34		34	34	34		34		
*496		2 (B)					34	34	34	34	34		34	34		34	34
*546		2 (B)					34		34	34	34		34	34		34	34
*596		2 (B)							34	34	34		34	34		34	34
*696		2 (B)							40	40	40		40	40		40	40
*796		2 (B)							40		40		40	40		40	40
PX-Z	156	2 (B)		16													
196 (x196/246/296/346)		2 (B)		16													
196 (x396/446)		2 (B)		20													
246		4 (C)			20												
296		4 (C)			23												
346 (x346/396/446/496)		4 (C)				23											
346 (x546/596/646/696)		4 (C)				34											
396		4 (C)				34											
446		4 (C)				34											
*496		4 (C)				34	34		34								
*546		4 (C)				34	34		34								
*596		4 (C)				34	34		34								
*696		4 (C)				40	40		40								
*796		4 (C)				40	40		40								

*Eseguiti a richiesta *Processed on request *Bearbeitet auf Anfrage